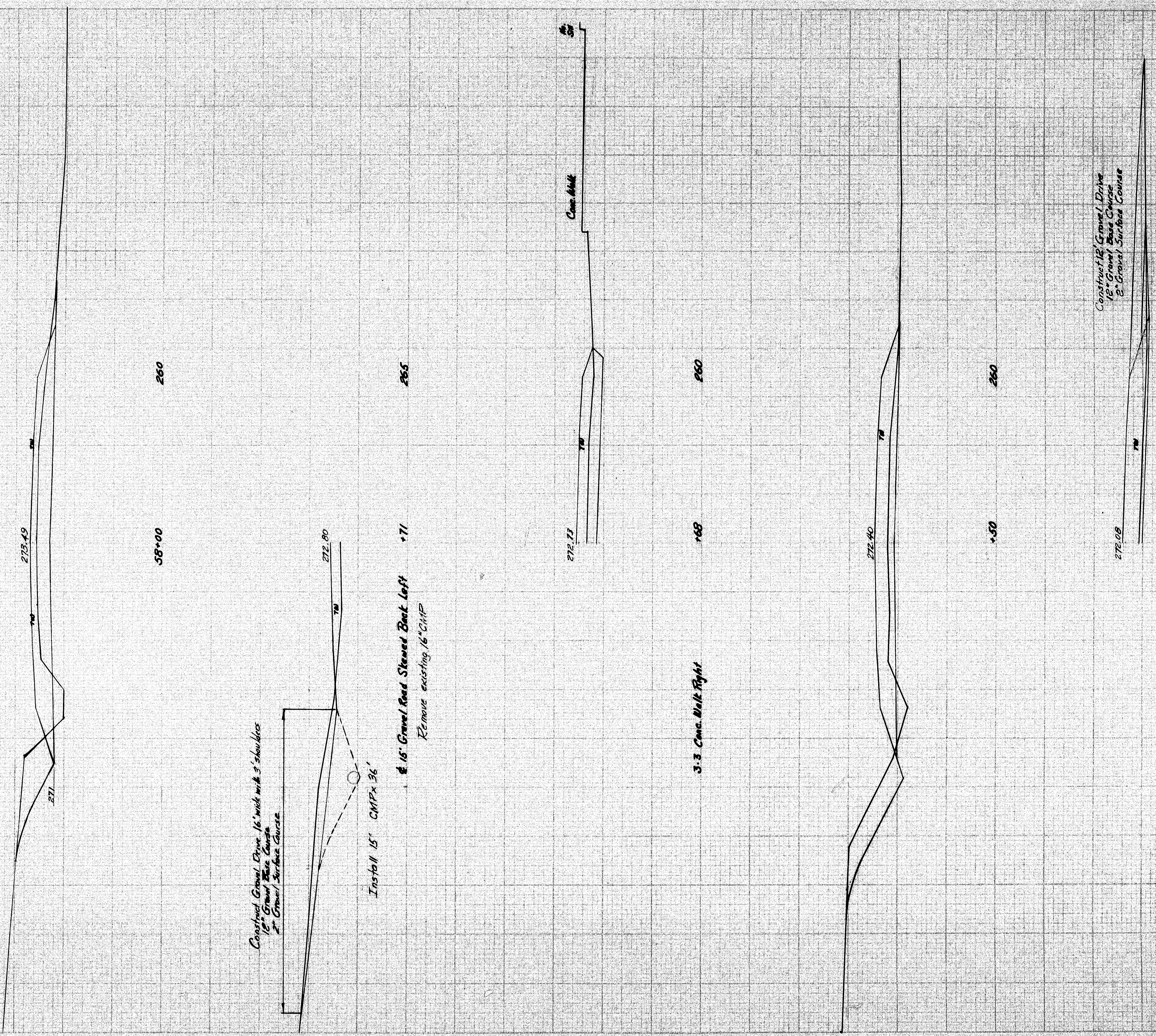


DATE	2/1/57
BY	W. J. B.
CHECKED	
APPROVED	

DATE	2/1/57
BY	W. J. B.
CHECKED	
APPROVED	

U. S. N. NO.	STATE	PROJECT NUMBER	SHEET NO.	TOTAL
1	MAINE	1-95-8(62)	41	93



Construct Gravel Drive 16' wide with 3' shoulders
12' Gravel Base Course
2' Gravel Surface Course

Install 15' CMPx 36'

15' Gravel Road Shoulder Back Left
Remove existing 16" CMP

3.3' Conc. Wall Right

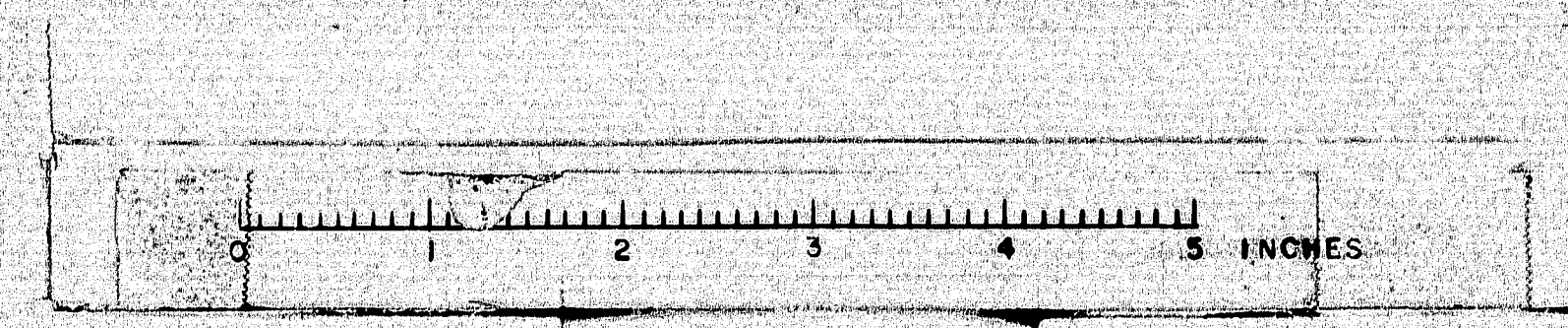
Construct 12' Gravel Drive
12' Gravel Base Course
2' Gravel Surface Course

Gravel Shoulder R. Gr. 15' 6.5' R. elev. 269.55

Revised

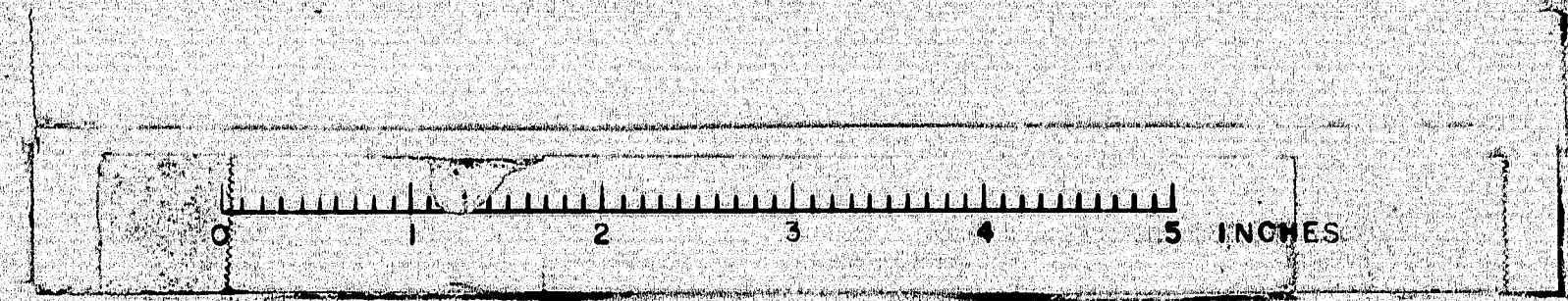
SCALE
Hor. & Vert. 1" = 5'

Route No. 116 Madaw



See Drawing 58-00

ORIGINAL	23	0477
SLAVE		
RECEIVED		
NOTED		
REMARKS		
RECEIVED		



Sections using Revised Grade Line
(See Sheets 35 & 36)
HRS. 7-10-65

SCALE
Hor. & Vert. 1" = 5'

Route No. 116 Medway

0545-0510

DATE	BY	CHKD

DATE	BY	CHKD

B. P. N.	STATE	PROJECT NUMBER	SHEET NO.	TOTAL SHEETS
1	MAINE		41B	

Install 36" ACCMP x 60' with Metal Endwall on Left @ Sta 54+25
 Inv. El. 264.5 Left
 Inv. El. 262.0 Right
 Place Hand Load Riser
 Grouted around Inlet & Outlet

Warp Slope at Pipe 2:1 to 1:1 Metal Endwall

Hand Load Riser
 Grouted Ditch @ Pipe
 (See Survey Plan - Sheet 11)

2:1 Slope @ Pipe 7

Hand Load Riser
 Grouted Ditch @ Pipe
 (See Survey Plan - Sheet 11)

12' Gravel Drive Left Skewed Ahead

Cul. Sept. 90' 15" x 30" CMP (No G.W.) - Remove

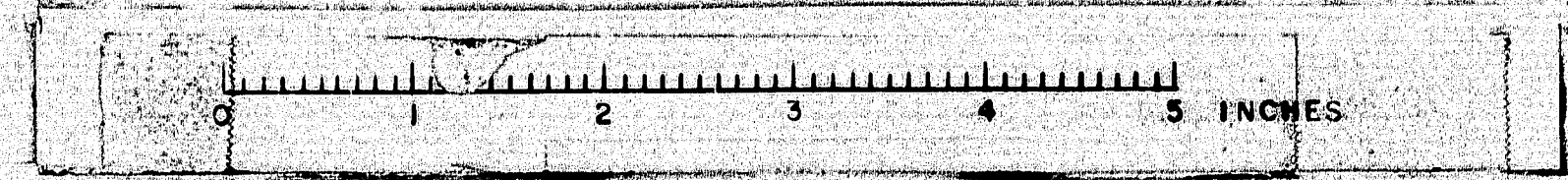
12' Gravel Entrance Right

Sections using Revised Grade Line
 (See Sheets 40B & 41B)
 H.R. 7-12-66

PLATE 3 - CROSS SECTION
 (SEE AND APPROVE BY E. & S. E.)
 ADAPTED BUILDING COMPANY, INC.

SCALE
 Hor. & Vert. 1" = 5'

Route No. 116 Medway



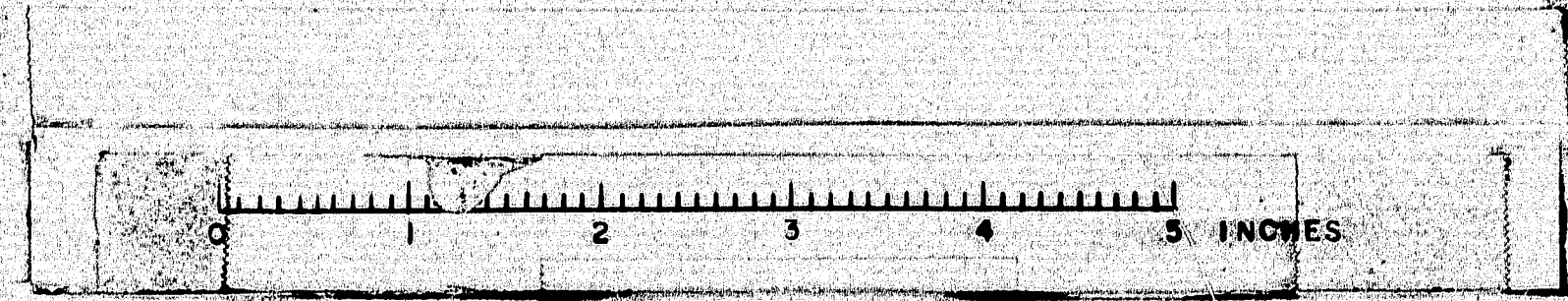
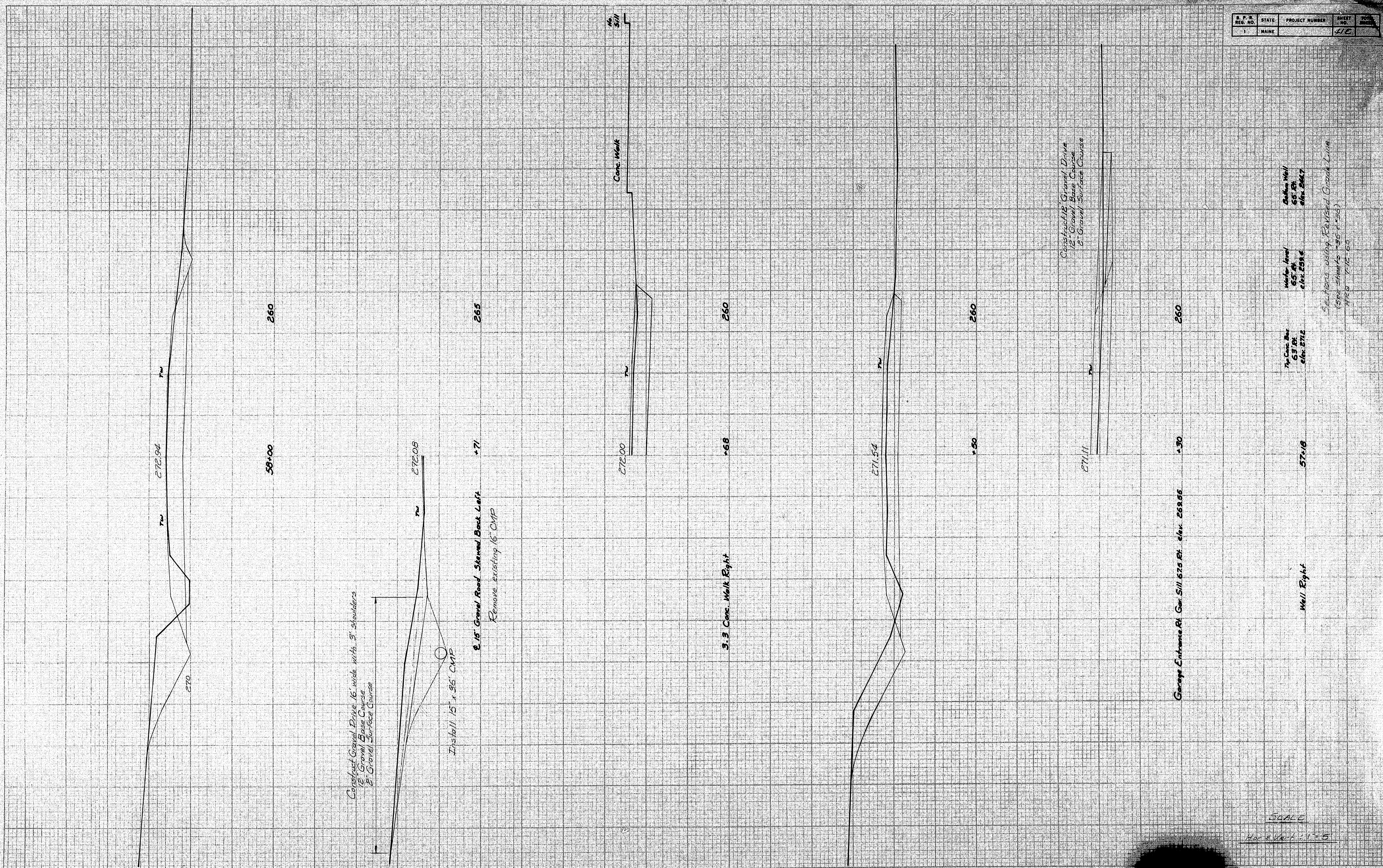
Sta 53+00 - 54+00

DATE	BY	REVISION
		1. INITIAL SURVEY
		2. NO. 1
		3. NO. 2
		4. NO. 3
		5. NO. 4
		6. NO. 5
		7. NO. 6
		8. NO. 7
		9. NO. 8
		10. NO. 9
		11. NO. 10
		12. NO. 11
		13. NO. 12
		14. NO. 13
		15. NO. 14
		16. NO. 15
		17. NO. 16
		18. NO. 17
		19. NO. 18
		20. NO. 19
		21. NO. 20
		22. NO. 21
		23. NO. 22
		24. NO. 23
		25. NO. 24
		26. NO. 25
		27. NO. 26
		28. NO. 27
		29. NO. 28
		30. NO. 29
		31. NO. 30
		32. NO. 31
		33. NO. 32
		34. NO. 33
		35. NO. 34
		36. NO. 35
		37. NO. 36
		38. NO. 37
		39. NO. 38
		40. NO. 39
		41. NO. 40
		42. NO. 41
		43. NO. 42
		44. NO. 43
		45. NO. 44
		46. NO. 45
		47. NO. 46
		48. NO. 47
		49. NO. 48
		50. NO. 49
		51. NO. 50
		52. NO. 51
		53. NO. 52
		54. NO. 53
		55. NO. 54
		56. NO. 55
		57. NO. 56
		58. NO. 57
		59. NO. 58
		60. NO. 59
		61. NO. 60
		62. NO. 61
		63. NO. 62
		64. NO. 63
		65. NO. 64
		66. NO. 65
		67. NO. 66
		68. NO. 67
		69. NO. 68
		70. NO. 69
		71. NO. 70
		72. NO. 71
		73. NO. 72
		74. NO. 73
		75. NO. 74
		76. NO. 75
		77. NO. 76
		78. NO. 77
		79. NO. 78
		80. NO. 79
		81. NO. 80
		82. NO. 81
		83. NO. 82
		84. NO. 83
		85. NO. 84
		86. NO. 85
		87. NO. 86
		88. NO. 87
		89. NO. 88
		90. NO. 89
		91. NO. 90
		92. NO. 91
		93. NO. 92
		94. NO. 93
		95. NO. 94
		96. NO. 95
		97. NO. 96
		98. NO. 97
		99. NO. 98
		100. NO. 99
		101. NO. 100
		102. NO. 101
		103. NO. 102
		104. NO. 103
		105. NO. 104
		106. NO. 105
		107. NO. 106
		108. NO. 107
		109. NO. 108
		110. NO. 109
		111. NO. 110
		112. NO. 111
		113. NO. 112
		114. NO. 113
		115. NO. 114
		116. NO. 115
		117. NO. 116
		118. NO. 117
		119. NO. 118
		120. NO. 119
		121. NO. 120
		122. NO. 121
		123. NO. 122
		124. NO. 123
		125. NO. 124
		126. NO. 125
		127. NO. 126
		128. NO. 127
		129. NO. 128
		130. NO. 129
		131. NO. 130
		132. NO. 131
		133. NO. 132
		134. NO. 133
		135. NO. 134
		136. NO. 135
		137. NO. 136
		138. NO. 137
		139. NO. 138
		140. NO. 139
		141. NO. 140
		142. NO. 141
		143. NO. 142
		144. NO. 143
		145. NO. 144
		146. NO. 145
		147. NO. 146
		148. NO. 147
		149. NO. 148
		150. NO. 149
		151. NO. 150
		152. NO. 151
		153. NO. 152
		154. NO. 153
		155. NO. 154
		156. NO. 155
		157. NO. 156
		158. NO. 157
		159. NO. 158
		160. NO. 159
		161. NO. 160
		162. NO. 161
		163. NO. 162
		164. NO. 163
		165. NO. 164
		166. NO. 165
		167. NO. 166
		168. NO. 167
		169. NO. 168
		170. NO. 169
		171. NO. 170
		172. NO. 171
		173. NO. 172
		174. NO. 173
		175. NO. 174
		176. NO. 175
		177. NO. 176
		178. NO. 177
		179. NO. 178
		180. NO. 179
		181. NO. 180
		182. NO. 181
		183. NO. 182
		184. NO. 183
		185. NO. 184
		186. NO. 185
		187. NO. 186
		188. NO. 187
		189. NO. 188
		190. NO. 189
		191. NO. 190
		192. NO. 191
		193. NO. 192
		194. NO. 193
		195. NO. 194
		196. NO. 195
		197. NO. 196
		198. NO. 197
		199. NO. 198
		200. NO. 199
		201. NO. 200
		202. NO. 201
		203. NO. 202
		204. NO. 203
		205. NO. 204
		206. NO. 205
		207. NO. 206
		208. NO. 207
		209. NO. 208
		210. NO. 209
		211. NO. 210
		212. NO. 211
		213. NO. 212
		214. NO. 213
		215. NO. 214
		216. NO. 215
		217. NO. 216
		218. NO. 217
		219. NO. 218
		220. NO. 219
		221. NO. 220
		222. NO. 221
		223. NO. 222
		224. NO. 223
		225. NO. 224
		226. NO. 225
		227. NO. 226
		228. NO. 227
		229. NO. 228
		230. NO. 229
		231. NO. 230
		232. NO. 231
		233. NO. 232
		234. NO. 233
		235. NO. 234
		236. NO. 235
		237. NO. 236
		238. NO. 237
		239. NO. 238
		240. NO. 239
		241. NO. 240
		242. NO. 241
		243. NO. 242
		244. NO. 243
		245. NO. 244
		246. NO. 245
		247. NO. 246
		248. NO. 247
		249. NO. 248
		250. NO. 249
		251. NO. 250
		252. NO. 251
		253. NO. 252
		254. NO. 253
		255. NO. 254
		256. NO. 255
		257. NO. 256
		258. NO. 257
		259. NO. 258
		260. NO. 259
		261. NO. 260
		262. NO. 261
		263. NO. 262
		264. NO. 263
		265. NO. 264
		266. NO. 265
		267. NO. 266
		268. NO. 267
		269. NO. 268
		270. NO. 269
		271. NO. 270
		272. NO. 271
		273. NO. 272
		274. NO. 273
		275. NO. 274
		276. NO. 275
		277. NO. 276
		278. NO. 277
		279. NO. 278
		280. NO. 279
		281. NO. 280
		282. NO. 281
		283. NO. 282
		284. NO. 283
		285. NO. 284
		286. NO. 285
		287. NO. 286
		288. NO. 287
		289. NO. 288
		290. NO. 289
		291. NO. 290
		292. NO. 291
		293. NO. 292
		294. NO. 293
		295. NO. 294
		296. NO. 295
		297. NO. 296
		298. NO. 297
		299. NO. 298
		300. NO. 299
		301. NO. 300
		302. NO. 301
		303. NO. 302
		304. NO. 303
		305. NO. 304
		306. NO. 305
		307. NO. 306
		308. NO. 307
		309. NO. 308
		310. NO. 309
		311. NO. 310
		312. NO. 311
		313. NO. 312
		314. NO. 313
		315. NO. 314
		316. NO. 315
		317. NO. 316
		318. NO. 317
		319. NO. 318
		320. NO. 319
		321. NO. 320
		322. NO. 321
		323. NO. 322
		324. NO. 323
		325. NO. 324
		326. NO. 325
		327. NO. 326
		328. NO. 327
		329. NO. 328
		330. NO. 329
		331. NO. 330
		332. NO. 331
		333. NO. 332
		334. NO. 333
		335. NO. 334
		336. NO. 335
		337. NO. 336
		338. NO. 337
		339. NO. 338
		340. NO. 339
		341. NO. 340
		342. NO. 341
		343. NO. 342
		344. NO. 343
		345. NO. 344
		346. NO. 345
		347. NO. 346
		348. NO. 347
		349. NO. 348
		350. NO. 349
		351. NO. 350
		352. NO. 351
		353. NO. 352
		354. NO. 353
		355. NO. 354
		356. NO. 355
		357. NO. 356
		358. NO. 357
		359. NO. 358
		360. NO. 359
		361. NO. 360
		362. NO. 361
		363. NO. 362
		364. NO. 363
		365. NO. 364
		366. NO. 365
		367. NO. 366
		368. NO. 367
		369. NO. 368
		370. NO. 369
		371. NO. 370
		372. NO. 371
		373. NO. 372
		374. NO. 373
		375. NO. 374
		376. NO. 375
		377. NO. 376
		378. NO. 377
		379. NO. 378
		380. NO. 379
		381. NO. 380
		382. NO. 381
		383. NO. 382
		384. NO. 383
		385. NO. 384
		386. NO. 385
		387. NO. 386
		388. NO. 387
		389. NO. 388
		390. NO. 389
		391. NO. 390
		392. NO. 391
		393. NO. 392
		394. NO. 393
		395. NO. 394
		396. NO. 395
		397. NO. 396
		398. NO. 397
		399. NO. 398
		400. NO. 399
		401. NO. 400
		402. NO. 401
		403. NO. 402
		404. NO. 403
		405. NO. 404
		406. NO. 405
		407. NO. 406
		408. NO. 407
		409. NO. 408
		410. NO. 409
		411. NO. 410
		412. NO. 411
		413. NO. 412
		414. NO. 413
		415. NO. 414
		416. NO. 415
		417. NO. 416
		418. NO. 417
		419. NO. 418
		420. NO. 419
		421. NO. 420
		422. NO. 421
		423. NO. 422
		424. NO. 423
		425. NO. 424
		426. NO. 425
		427. NO. 426
		428. NO. 427
		429. NO. 428
		430. NO. 429
		431. NO. 430
		432. NO. 431
		433. NO. 4

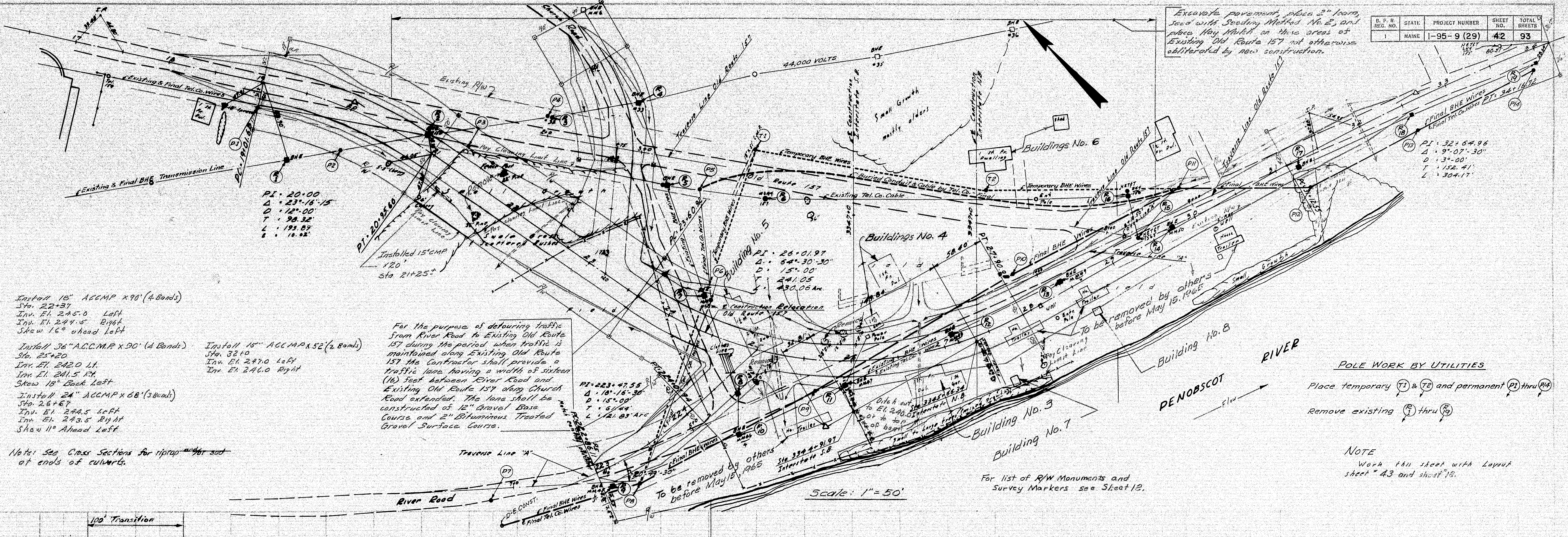
ORIGINAL	RECEIVED	DATE	BY
SUPPLY			
		EMPLOYEE	
		GRADE	
		ORGANIZATION	

Top Core Box	Water Level	Bottom Well
63 DR	65 ft	65 ft
64m. 2712	64m. 259.6	64m. 264.7

Sections using Revised Grade Line
(See Sheets 7-51 to 7-53)
HRS 7-12-65



Excavate pavement, place 2" from, seed with Seeding Method No. 2, and place Hay Mulch on these areas of Existing Old Route 157 not otherwise obliterated by new construction.



Install 18" ACCMP X 90' (4 Bands)
Sta. 22+37
Inv. El. 245.0 Left
Inv. El. 244.5 Right
Skew 16° ahead Left

Install 36" ACCMP X 90' (4 Bands)
Sta. 25+20
Inv. El. 242.0 Lt.
Inv. El. 241.5 Rt.
Skew 18° back Left

Install 24" ACCMP X 68' (3 Bands)
Sta. 26+67
Inv. El. 244.5 Left
Inv. El. 243.5 Right
Skew 11° ahead Left

Install 18" ACCMP X 52' (2 Bands)
Sta. 32+0
Inv. El. 247.0 Left
Inv. El. 246.0 Right

For the purpose of detouring traffic from River Road to Existing Old Route 157 during the period when traffic is maintained along Existing Old Route 157 the Contractor shall provide a traffic lane having a width of sixteen (16) feet between River Road and Existing Old Route 157 along Church Road extended. The lane shall be constructed of 12" Gravel Base Course and 2" Bituminous Treated Gravel Surface Course.

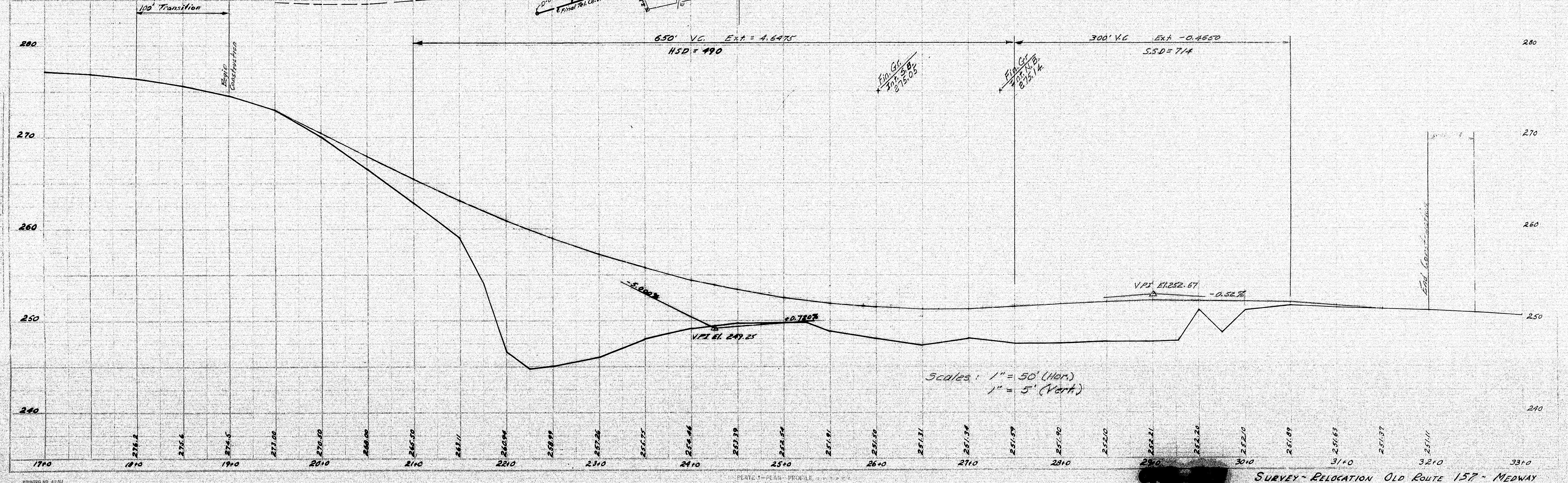
Note: See Cross Sections for riprap at ends of culverts.

POLE WORK BY UTILITIES
Place temporary (T) & TE and permanent (P) thru (PH)
Remove existing (E) thru (R)

NOTE
Work this sheet with Layout sheet 43 and sheet 42.

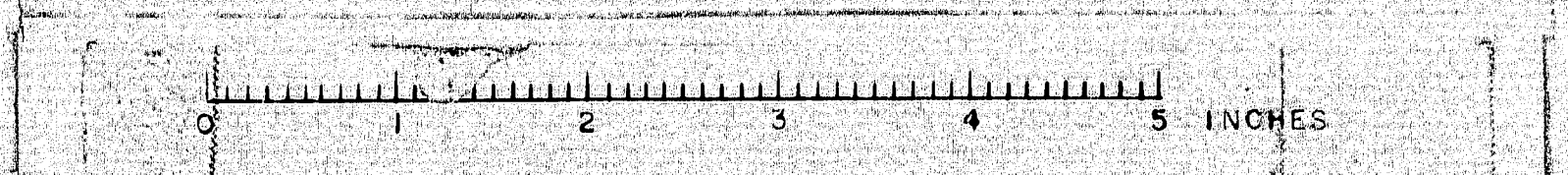
For list of R/W Monuments and Survey Markers see Sheet 12.

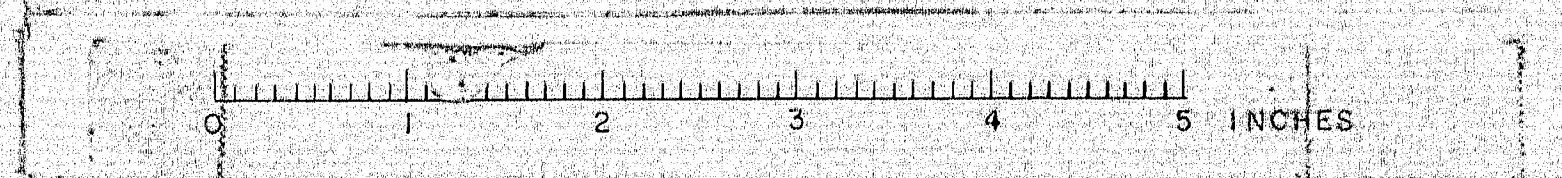
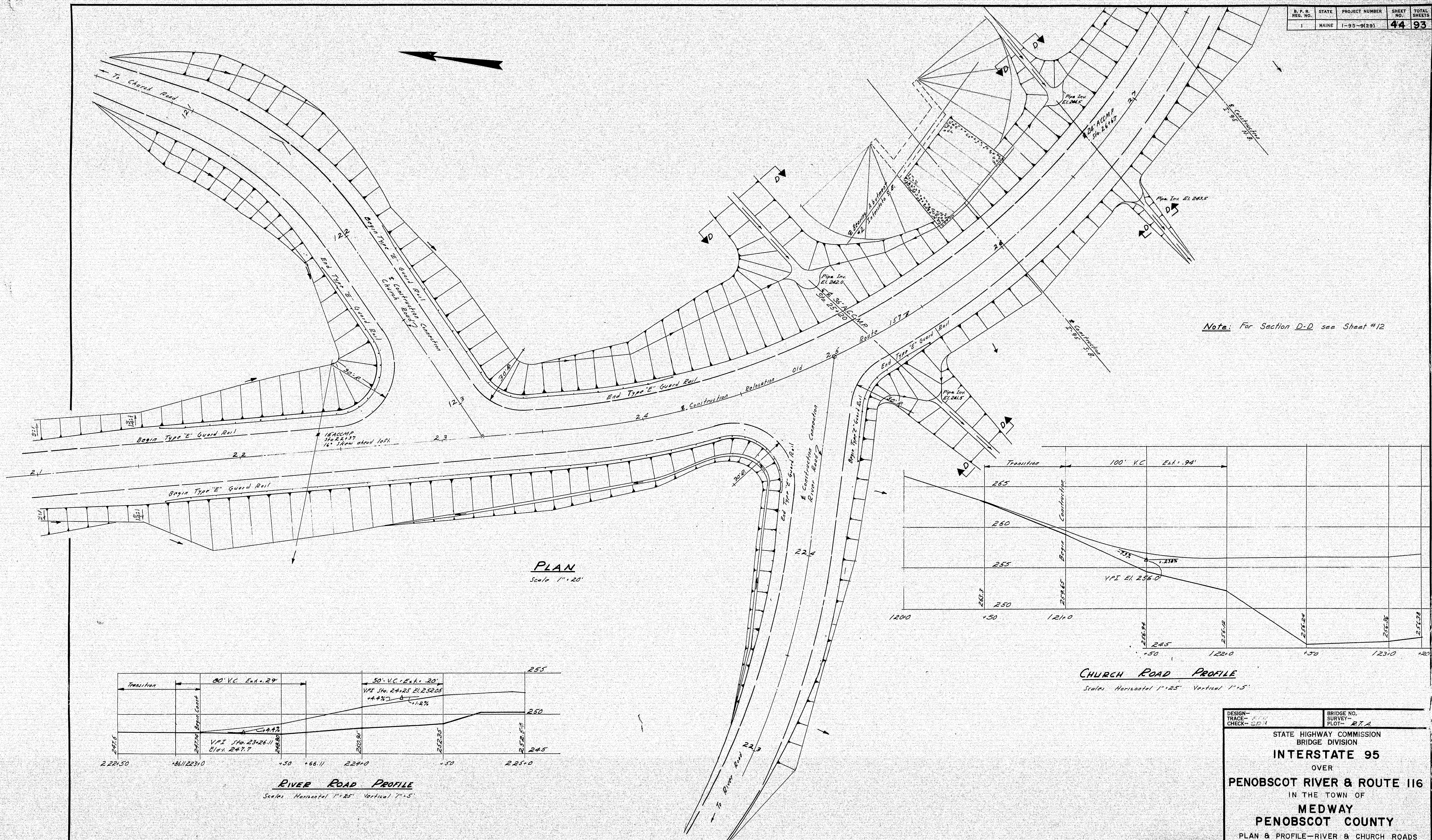
Scale: 1" = 50'

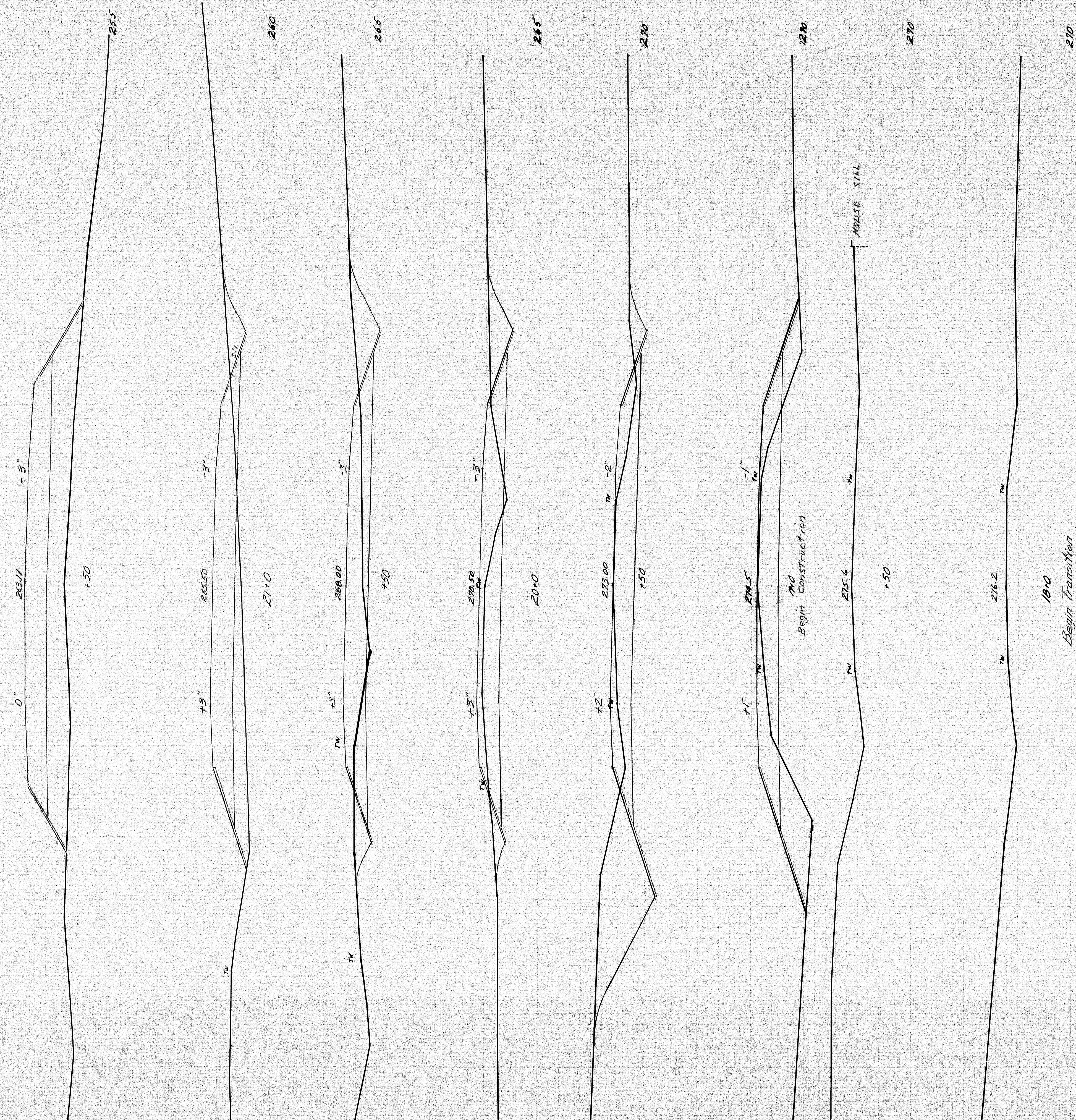


Scales: 1" = 50' (Hor.)
1" = 5' (Vert.)

SURVEY - RELOCATION OLD ROUTE 157 - MEDWAY

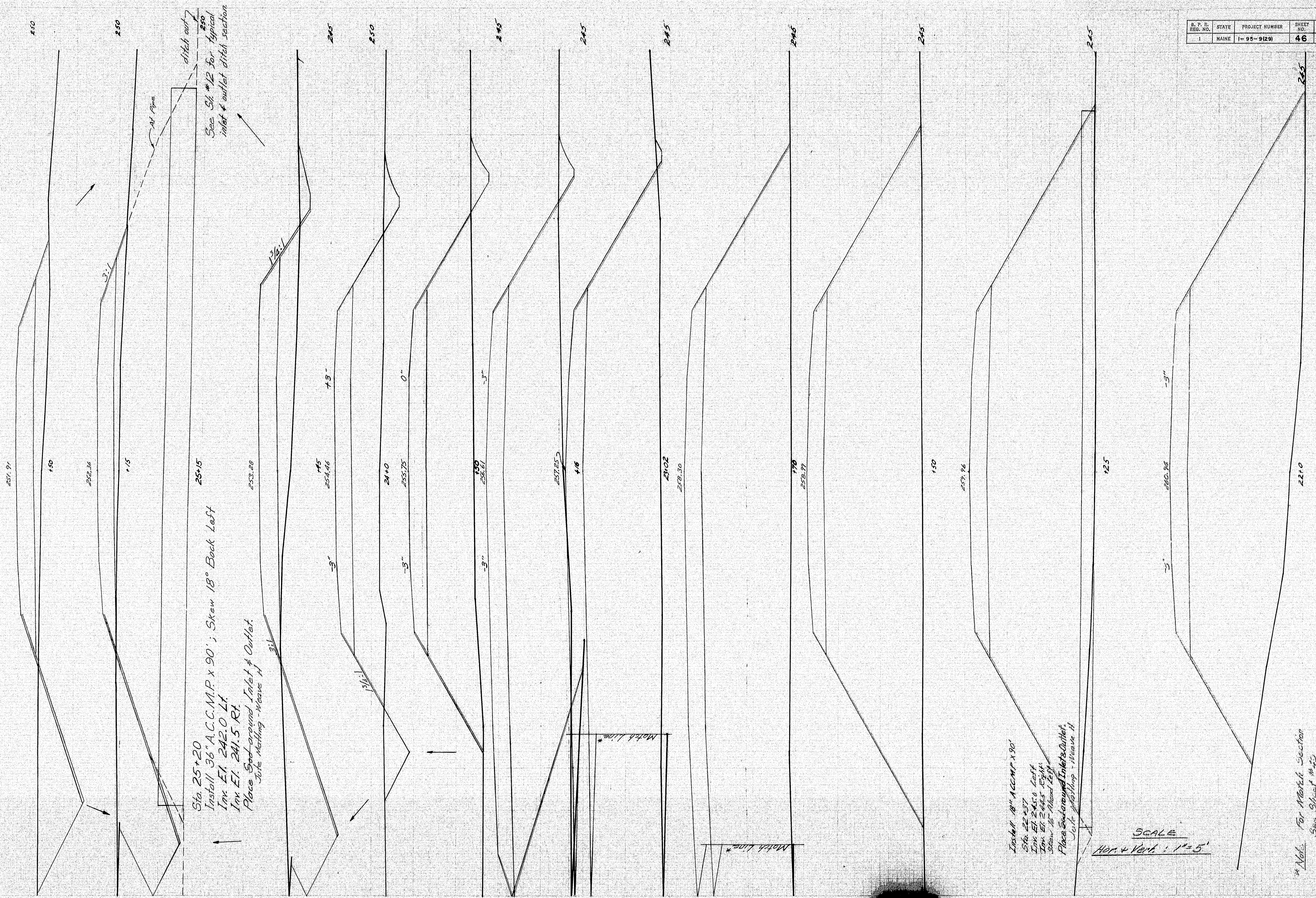




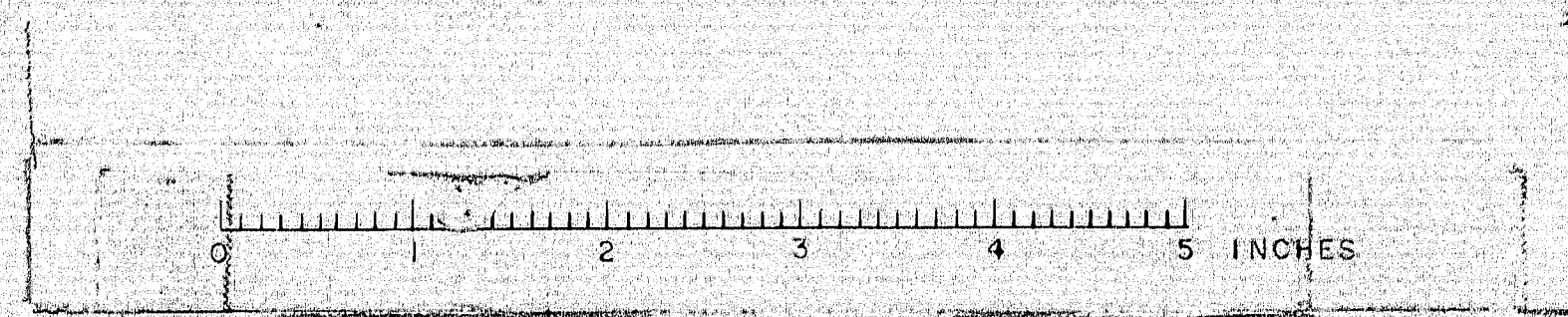


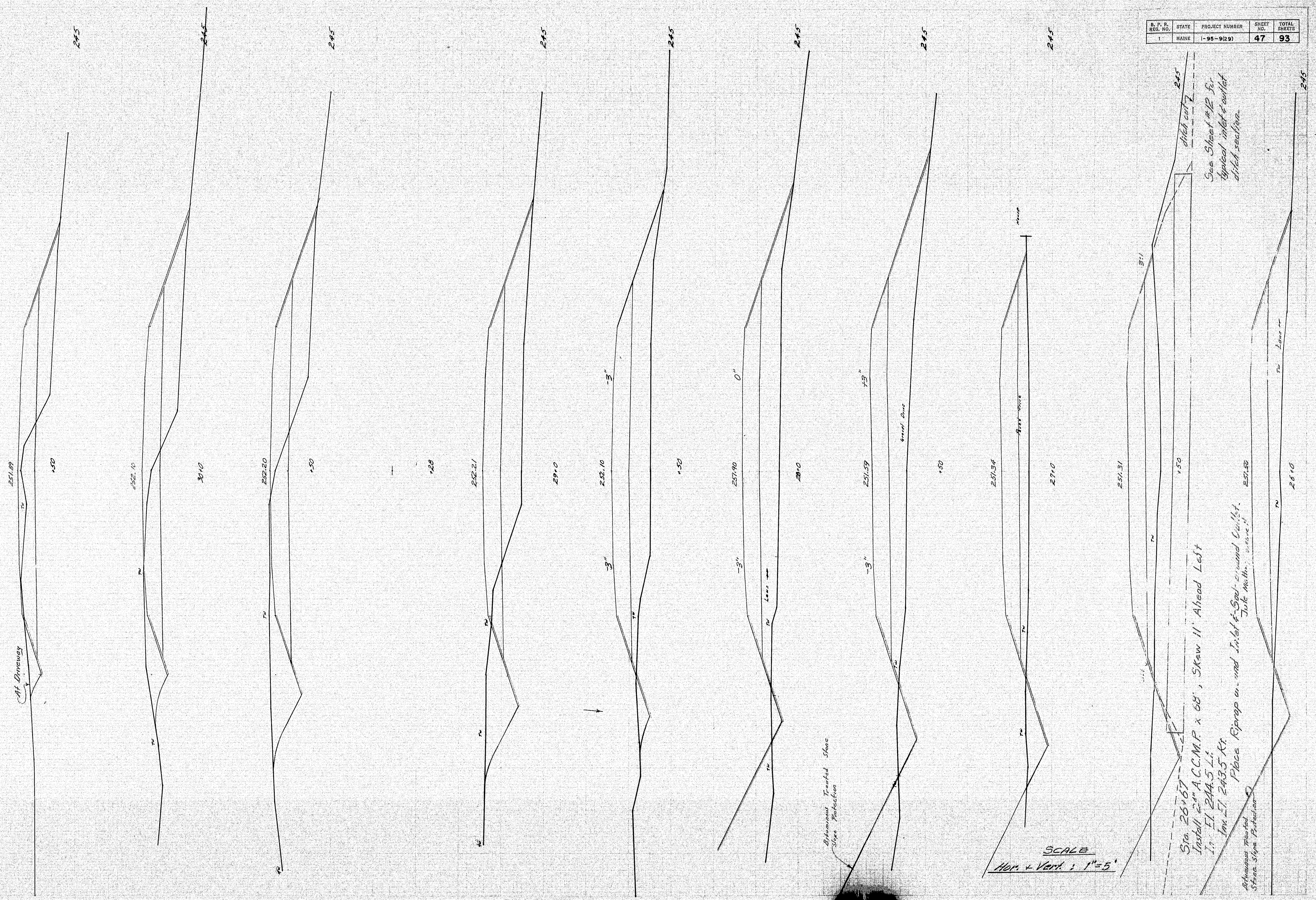
SCALE
Hor. + Vert. : 1" = 5'

X-SECTIONS RELOCATION OLD ROUTE 157- 18+0 to 21+50



X-SECTIONS RELOCATION OLD ROUTE 157 - 22+0 TO 25+50





X-SECTIONS RELOCATION OLD ROUTE 157 ~ 26+0 TO 30+50

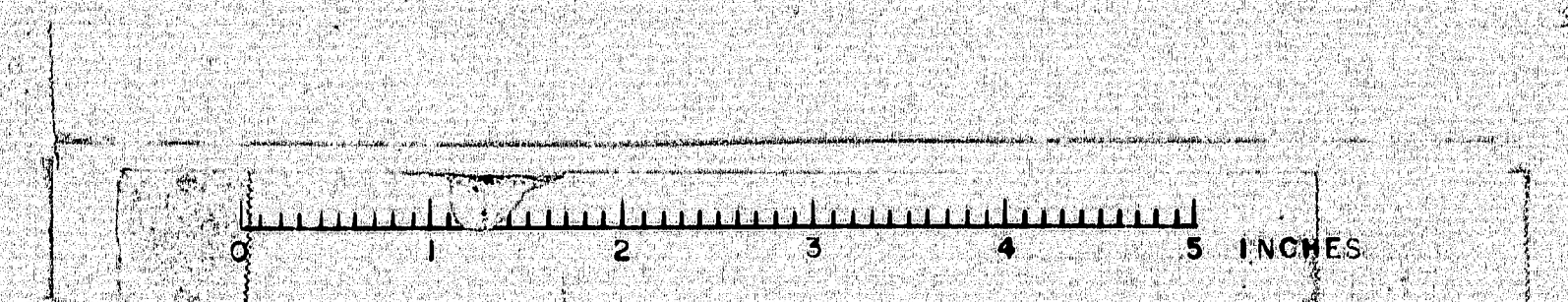


PLATE 3 - CROSS SECTION A. P. R. R. L.
MAINE AND PORTLAND, ME. A. L. L.
COURTESY BRIDGES COMPANY 1902.

SCALE
Hor. & Vert. 1" = 5'

V CDH

X Sections

Connection from
Church Road to
Relocation Old Route 157

*Note: For March Lim.
See Sheet # 46

120+50
Begin Trenching
Connection Church Road
to Relocation Old Route 157

121+0
Begin Construction

257.4

3"

257.0

121+50

3"

253.9

121+83

3"

252.94

122+0

3"

252.12

122+50 (North Section)*

4:1

3"

256.24

123+0

256.36

U. S. P. R. REG. NO.	STATE	PROJECT NUMBER	SHEET NO.	TOTAL SHEETS
1	MAINE	1-95-9 (29)	20	29

252.63

224.73

252.01

224.38

250.95

224.0

248.80

223.50

247.74

223.10

223.00

Bayou Transition

Connection from River Road to
Relocation of Old Road 157

SCALE
Horizontal 1" = 5'

Connection from
River Road to
Relocation of Old Road

X-Sectures

PLATE 3 - CROSS SECTION - P. R. R. R. R.
CHARTERED SURVEYING ENGINEER, INC.

